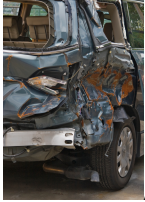


## Research on Marijuana's Role in Car Crashes Expands as Drug Availability Grows

Wednesday, 11 June 2014 18:41

---



As marijuana becomes more readily available, a growing number of researchers are studying the possible link between marijuana and fatal car crashes, *USA Today* reports.

A study published earlier this year by Columbia University researchers found marijuana contributed to 12 percent of traffic deaths in 2010.

The study of almost 24,000 fatal car accidents found marijuana was linked to three times as many traffic deaths compared with a decade earlier.

According to a 2010 survey by the National Highway Traffic Safety Administration (NHTSA), one in eight high school seniors said they drove after smoking marijuana. Almost one-quarter of drivers killed in drug-related crashes were younger than 25, the article notes. In addition, almost half of fatally injured drivers who tested positive for marijuana were under age 25.

The National Institute on Drug Abuse (NIDA) and NHTSA have been conducting a three-year study to determine how inhaled marijuana impacts driving performance.

NIDA notes on its website, "Considerable evidence from both real and simulated driving studies indicates that marijuana can negatively affect a driver's attentiveness, perception of time and speed, and ability to draw on information obtained from past experiences. Research shows that impairment increases significantly when marijuana use is combined with alcohol."

NIDA notes it is difficult to measure the exact contribution of drug intoxication to driving accidents, because blood tests for drugs other than alcohol are inconsistently performed, and many drivers who cause accidents are found to have both drugs and alcohol in their system, making it hard to determine which substance had the greater effect.

Lawmakers in Washington state, where recreational marijuana use is now legal, are trying to determine how police officers can identify drivers impaired by marijuana use. There is no consensus on what blood level of THC, the active ingredient in marijuana, impairs driving, the

**Research on Marijuana's Role in Car Crashes Expands as Drug Availability Grows**

Wednesday, 11 June 2014 18:41

---

newspaper notes. Breathalyzers cannot be used for marijuana.